

SafetyCube

Safety CaUsation, Benefits and Efficiency



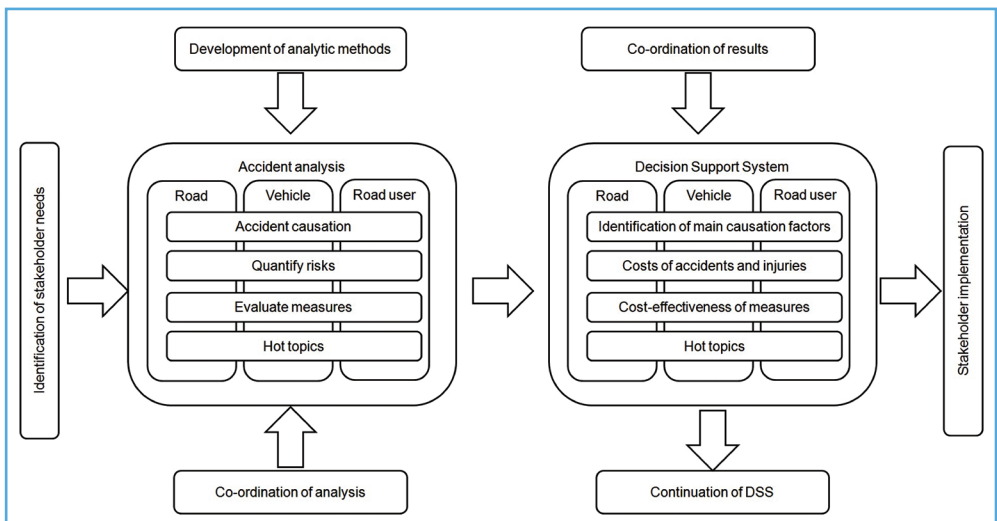
MOTIVATION AND OBJECTIVES

- Evidence based road safety policies are becoming more common and there is much better availability of national data and state-of-the-art knowledge.
- Effective road safety policies need good information about accident risk factors and about measures.
- SafetyCube will meet this need by generating new knowledge about accident risk factors and the effectiveness of measures relevant to Europe.
- It will structure this information so it can be incorporated in the European Road Safety Observatory.

PROJECT PLAN, MILESTONES AND DELIVERABLES

- | | |
|--|-----|
| • Project Dissemination Plan | M06 |
| • Crash cost estimates for European countries | M24 |
| • Methodological framework for the evaluation of road safety measures | M33 |
| • Accident Analysis, Risk factors, knowledge gaps and state-of-the-art on road user behaviour, vehicle and infrastructure models | M24 |
| • Efficiency assessment of key measures, detailed outcomes | M30 |
| • Identification of measures and their safety effects – vehicles | M27 |
| • Inventory of assessed vehicle risk factors and measures | M30 |
| • Practical guidelines for the registration and monitoring of serious road injuries | M18 |
| • Clearing-house of road safety risks and measures | M36 |

TECHNICAL APPROACH



ACHIEVEMENTS

- New coordinated methodology to assess cost effectiveness of measures
- New systematic evaluation of risks and measures relating to the road user, vehicle and infrastructure
- New clearing-house of road safety measures

Budget 5.8 M€

Duration 36 months

DG Grow

Coordinator Pete Thomas, Loughborough Uni

Partners LOUGH, NTUA, IBSR/BIVV, SWOV, KfV, IFSTTAR, SAFER, TOI, ERF, CTL, ASPB, MHH, AVP, LAB, CEESAR, CIDAUT, DEKRA

Website www.safetycube-project.eu

Funding 5.8 M€

Start May 2015

Contract n° 633485

Contact safetycube@lboro.ac.uk

